

INTRODUCTION

Hicri Ercili Shipyard is a shipyard that took its first step in shipbuilding industry in 2016 and has made a name for itself with the projects it has carried out since 2017, when it commenced service.

Hicri Ercili is a group with offices in Mersin, Izmit, Corlu, Yalova and Istanbul, with headquarters in Bandirma. The company has 600 thousand tons of chemical material storage and customs clearance capacity and continues to provide products and services to domestic and international customers with its fleet of 300 tanker trucks with ADR.

Carrying his successful experience in chemical transportation to maritime transportation, Hicri Ercili entered the sector by purchasing his first chemical tanker M / T Hicri Ercili Kaan and then continued to increase the number of tankers with his experienced expert staff. Company continued to grow by adding M/T Aysenaz in 2012, M/T Bandirma in 2014, M/T Kapidagi in 2017 and M/T Winter Sun in 2018 to the fleet. The company is also continuing its new shipbuilding, modification and maintenance and repair activities in Yalova Altinova with its 45,000 m² facility.

We increased our capacity to approximately 45 thousand square meters by purchasing the adjacent shipyard area in 2017, after purchasing our first shipyard in 2016. Our two

slipways, 145 meters long and 30 meters wide, were designed to build chemical tankers of approximately 20 thousand tons with gantry cranes on each slipway. In addition, we have a total covered area of around 10 thousand square meters. We have divided the shipyard into two parts as new building and repair and maintenance. We have the necessary technical equipment in both fields and we have service elements that can meet all kinds of needs independently from each other. Although the main staff is 35 people in our shipyard, we provide service with 500 employees including subcontractor employees.

In the shipyard operations, which we entered for the purpose of making chemical tankers, we also focused on repair maintenance and developed ourselves in this field. We built a part of the shipyard completely for repair and maintenance. We have provided a floating dock to the shipyard as of last year. We have increased our pier capacity from 9x150 meters to approximately 300 meters with this floating dock. The floating dock is in 116 meters length, 30 meters width and has a lifting capacity of 4 thousand 500 tons. In addition to this, we have another floating dock project and we continue to work for it. We have completed around fifteen projects as a new building in the shipyard.



CONTACT - LOCATION



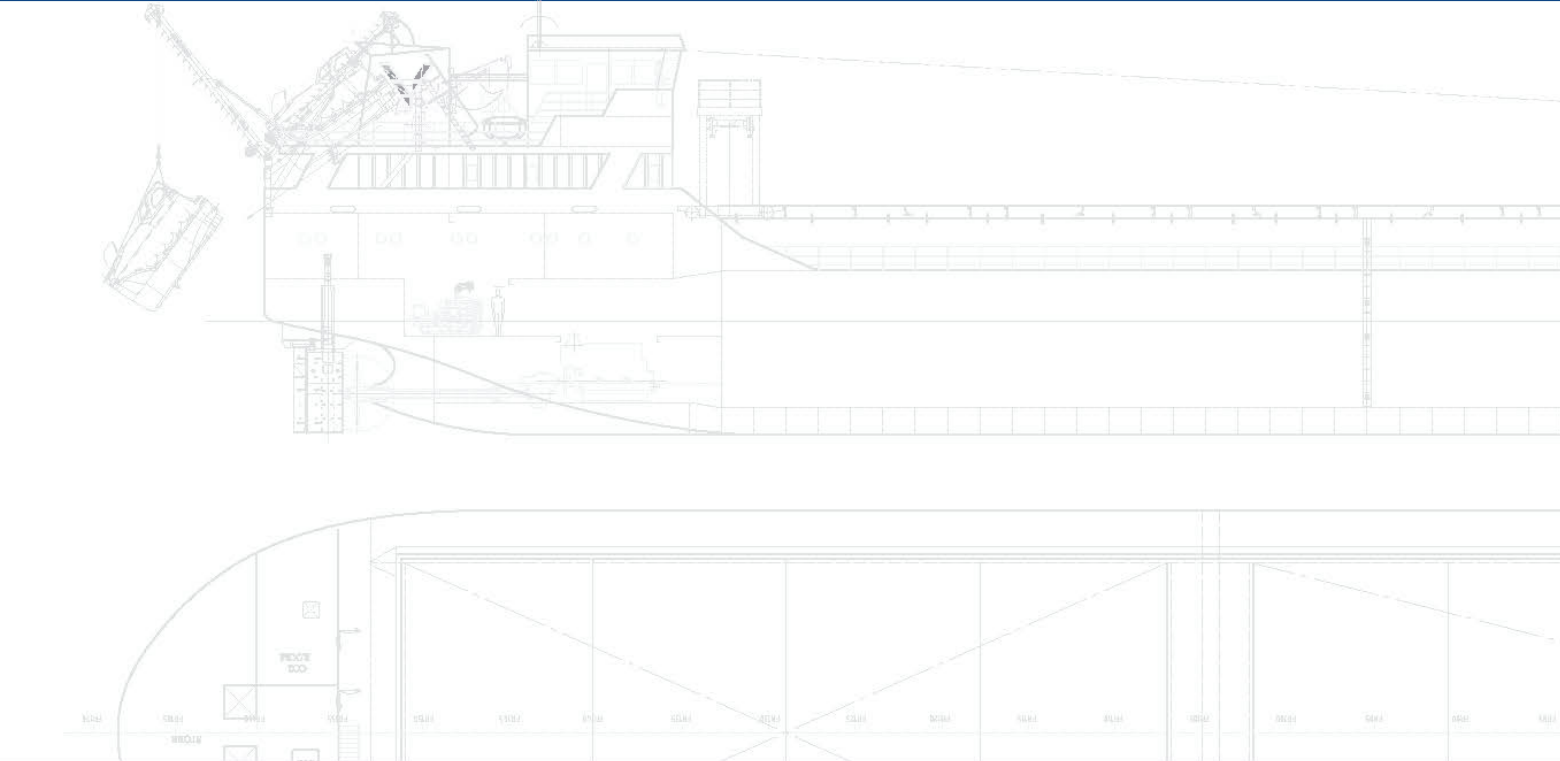
Shipyard:
HICRİ ERCİLİ SHIPYARD
Devlet Yolu Altı Mevkii Tersaneler Cd.
No:70/2 Altinova / YALOVA- TURKEY
Phone: +90 226 461 51 36



Office:
Barbaros Mah. Alzambak Sok.
Varyap Meridian Grand Tower A blok Kat:4
Daire 54 Bati Atasehir- Atasehir / ISTANBUL- TURKEY
Phone: +90 216 491 02 59

www.hicriercilisipyard.com.tr

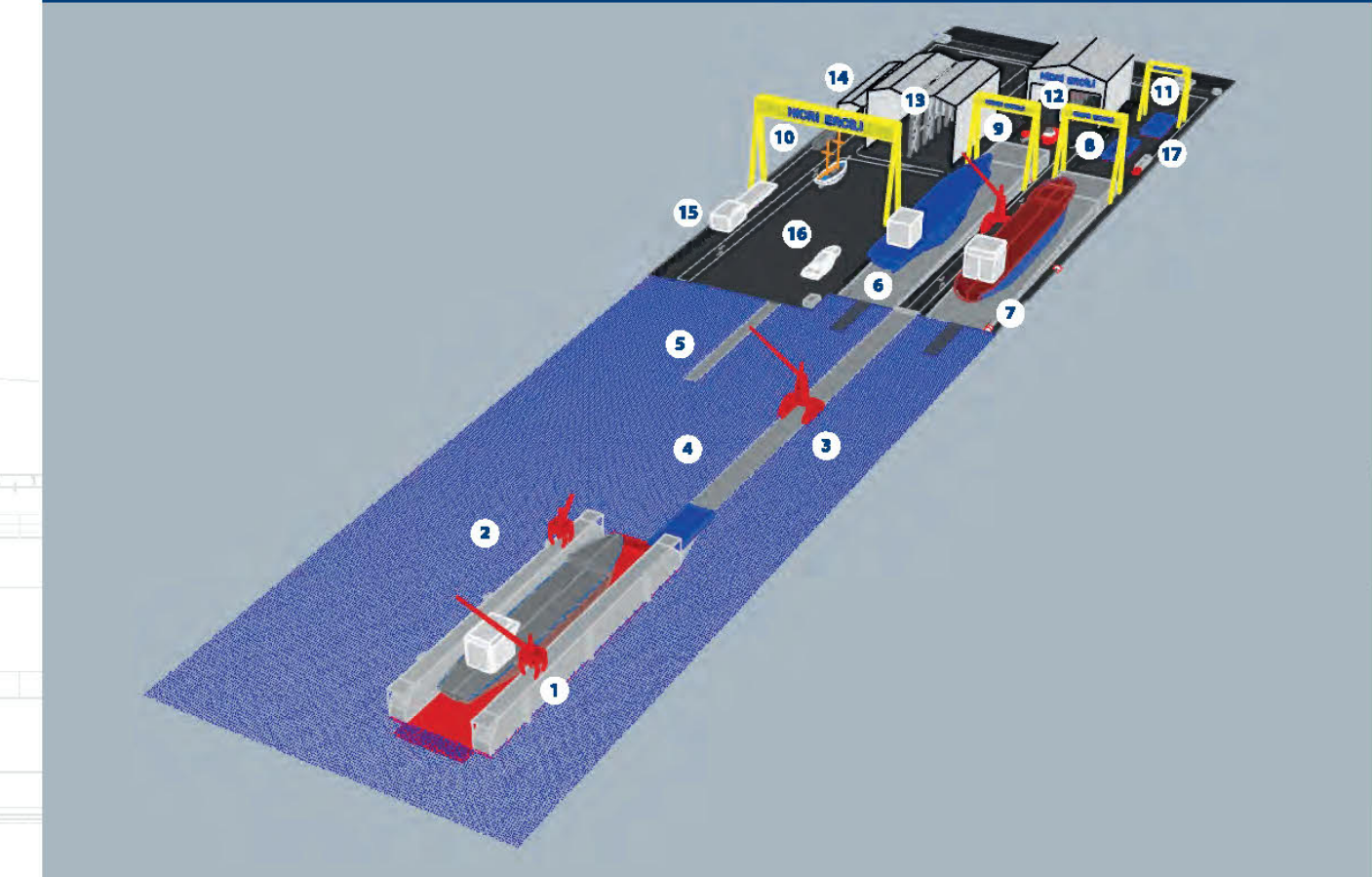
shipyard@hicriercili.com.tr



**RELIABLE AND
INNOVATIVE**

www.hicriercilishipyard.com.tr

HICRİ ERCİLİ SHIPYARD LAYOUT



1. Floating dock : 116x31m
2. Dock Cranes : 5t lifting capacity x 2 pcs
3. Harbour Cranes : 30tx28mx2pcs
4. Pier 1 : 170m
5. Pier 2 : 80m
6. Slipway 1 : 146x27m
7. Slipway 2 : 132x30m
8. Gantry Crane : 60t
9. Gantry Crane : 100t
10. Gantry Crane : 500t
11. Gantry Crane : 20t
12. Hangar no 1 : 42x36x40m – Crane 2x15t
13. Hangar no 2 : 40x54x41m – Crane 2x12t
14. Hangar no 3 : 60x12x41 – Crane 2x25t
15. Administration Building
16. New Building Construction Area
17. New Building Construction Area

CERTIFICATES



ISO 9001:2015
ISO 14001:2015



OHSAS 18001:2007

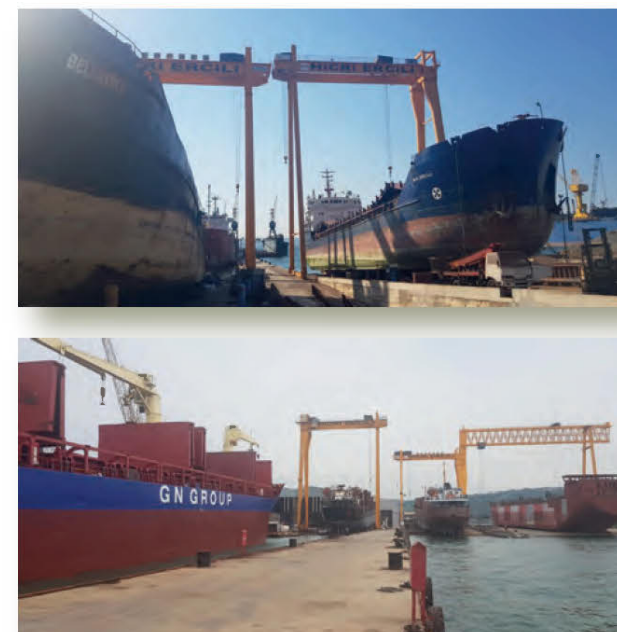
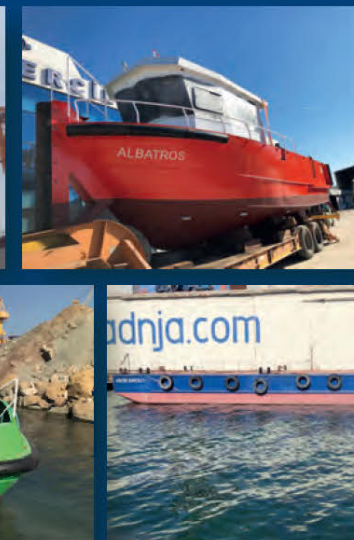
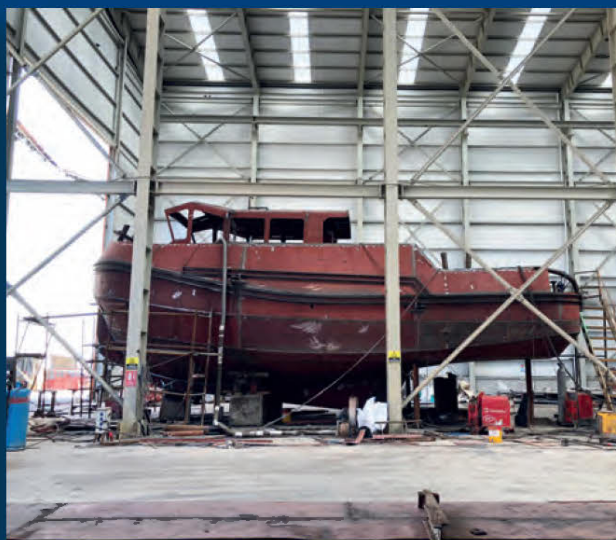
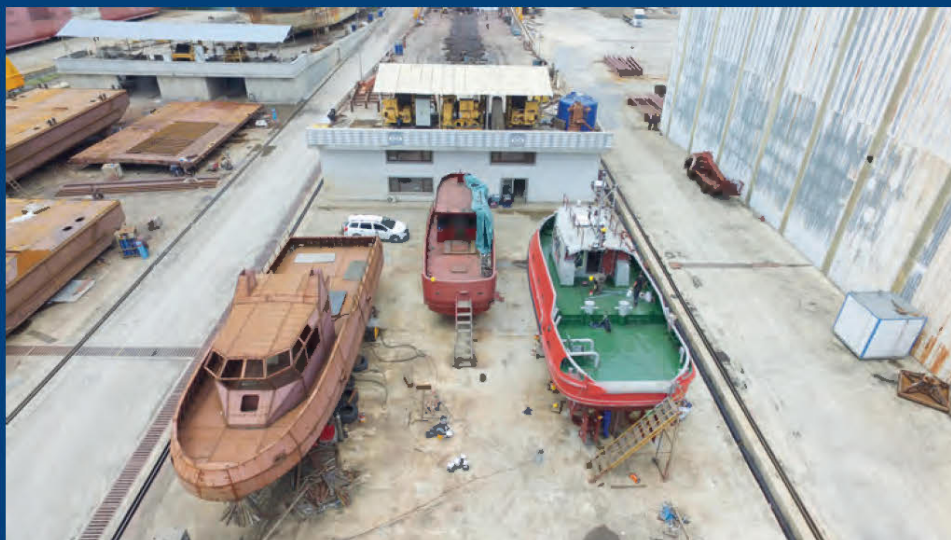


Firm Conformity
Construction of Ships

NEW BUILDING

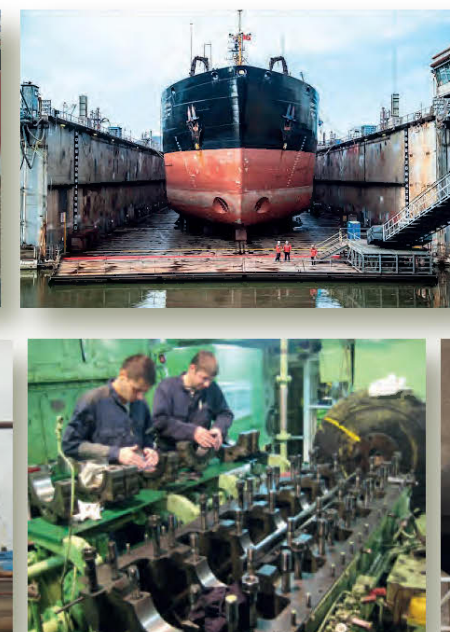
Hicri Ercili shipyard with 2 Slipway, (130x30m) 10.000m² closed and 35.000m² open new construction area is suitable for all types of new constructions.

Mass production of tugboats, service boats, barges and split barges



SHIP REPAIR SERVICES

- Sand blasting, painting
- Rudder, shaft & propeller repairs
- Cargo and ballast tank treatment
- Bow thruster maintenance
- Main / Aux. engine maintenance
- Boiler, heat exchangers, pumps maintenance and repairs
- Turbocharger, governor overhauling
- Electrical works
- Mechanical works
- Navigational equipment services
- Fire & safety system services



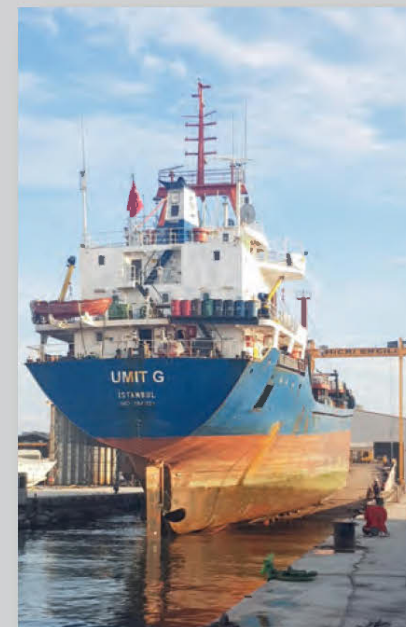
REPAIR & MAINTENANCE

Hicri Ercili Shipyard supply effective repair works with 15.000 dwt floating dock and 2 slipways



SHIP TYPES IN REPAIR

- Bulk Carrier
- Chemical Tanker
- Reefer
- General Cargo
- Container
- LPG Carrier
- Vehicle Carrier
- Ro-Ro (Fast Ferry)
- Tug Boat
- Heavy Load Carrier
- Fishing Vessel
- Platform/Offshore
- Supply Vessel



CONVERSION PROJECTS

Hicri Ercili Shipyard is also active in special conversion projects. Lengthening projects, hatch coaming elevation, and heavy steel construction

